

## Records Designation Tag

Project No. G07453E Date of Record 09/13/2007

Please select **ONE**

- ☐ Analytical Data
- ☐ Bidding/Contractor Information
- ☐ Correspondence
- ☐ Costs/Application for
- ☐ Design Calculations -
- ☐ Design Notes - Dept.
- ☐ Executed Contract Documents
- ☐ Field Records - Dept.
- ☐ Funding
- ☐ MDOT Final Deliverables
- ☐ Meetings
- ☐ Non-Compliance Notices
- ☐ Permits/Regulatory/Easements
- ☐ Project Closeout
- ☐ Project Management
- ☐ Public Information Programs
- ☒ Reports & Studies - Final FTC&H (☐ *✓ if using specific report type-see back*)
- ☐ Reports & Studies - Non FTC&H (☐ *✓ if using specific report type-see back*)
- ☐ Request for Information (RFI)
- ☐ Specifications/Characterization of Work
- ☐ Submittals (Shop Drawings)
- ☐ Supplemental Instructions (SI)
- ☐ Supporting Data
- ☐ Survey
- ☐ Training
- ☐ Well Logs
- ☐ Work Change Directives

This Document Relates to  
Correspondence Dated:

09/13/2007

Sent By:

RPV

RDT Prepared By: J Denstow  
First Initial, Last Name

### Administrative Records

- \* Legal Issues
- \* Professional Contracts

**\*Send to Corporate Administrative Assistant**

# **ASBESTOS INSPECTION**

## **VANDER WERF HALL**

**PREPARED FOR:  
HOPE COLLEGE  
HOLLAND, MICHIGAN**

**SEPTEMBER 13, 2007  
PROJECT NO. G07453E**

This report was saved as a Master PDF.

If additional printed copies are needed, the file is found  
at:

J:\07453E\CORR

(path)

ASB\_2007\_0913\_Master.pdf

(file name)

## TABLE OF CONTENTS

INTRODUCTION.....	1
CERTIFICATION.....	1
INSPECTION PROCEDURES AND SAMPLING METHODOLOGY.....	1
RESULTS.....	2
CONCLUSIONS.....	3

## LIST OF FIGURES

Figure 1	Sample Location Map – Ground Floor
Figure 2	Sample Location Map – First Floor
Figure 3	Sample Location Map – Second Floor

## LIST OF TABLES

Table 1	Description of Homogeneous Materials
Table 2	Bulk Sample Location Log
Table 3	Room-By-Room Location of Asbestos Containing Materials
Table 4	Summary of Asbestos-Containing Homogeneous Materials

## LIST OF APPENDICES

Appendix	Analytical Reports
----------	--------------------

## LIST OF ABBREVIATIONS/ACRONYMS

ACM	asbestos containing material
CFR	Code of Federal Regulations
COC	chain of custody
EPA	U.S. Environmental Protection Agency
FTC&H	Fishbeck, Thompson, Carr & Huber, Inc.
MDEQ	Michigan Department of Environmental Quality

## INTRODUCTION

FTC&H was retained by Hope College to conduct an asbestos inspection of Vander Werf Hall, located at 27 Graves Place, Holland, Michigan. Based on the information that was provided to FTC&H, the following is known about the facility:

- Original date of construction was not available.
- Building is two stories with a basement.
- Building materials:
  - Floors - vinyl tile, carpet over vinyl tile, carpet, ceramic tile, or cement.
  - Walls – block, drywall, and plaster.
  - Exterior – masonry walls with flat roof.
  - Ceilings – open, suspended, and glued on ceilings.
- Steam fed forced air heating system.
- The facility is used as offices, classrooms, and laboratories.

The inspection was conducted according to the protocol described in the Asbestos Construction Standard, 29 CFR 1926.1101. The inspection did not include: roofing materials; destructive sampling; equipment; fiberglass; steel; concrete/mortar/block; ceramic tile; nor inaccessible areas/materials. For purposes of this report, fire doors and hatches and transite countertops were assumed to contain asbestos.

The inspection was conducted on May 30, 2007, in accordance with the Environmental Health Resources, Inc. proposal dated October 25, 2005.

## CERTIFICATION

The building inspection was lead by a State of Michigan accredited Asbestos Building Inspector, Mr. Mark A. Lutkenhoff, Accreditation Number A12430. All samples were sent under COC to an independent laboratory for analyses.

## INSPECTION PROCEDURES AND SAMPLING METHODOLOGY

The inspection was conducted in a room-by-room fashion. According to the standard, all materials were considered suspect ACMs for sampling purposes. For the purposes of this report, the terms homogeneous area and homogeneous material are used interchangeably. Homogeneous material numbers were arbitrarily selected depending on when they were first identified. The number of samples collected from each homogeneous material was determined depending on the type of material. For

example, at least 3 samples were collected from thermal system insulation. Surfacing materials were sampled according to the size: 3 samples were collected from a material covering less than 1,000 square feet; 5 samples were collected from areas covering 1,001 to less than 3,000 square feet; 7 samples were collected from areas covering more than 3,000 square feet. A minimum of 1 sample was collected from miscellaneous materials. Sample locations were randomly selected by the inspector at the time of the inspection.

The laboratory was instructed to discontinue analyzing samples from a homogeneous material when the first asbestos-containing sample was identified. All layers of the submitted sample were analyzed. Samples with detectable levels of asbestos below the 1% threshold for ACM were, at the request of Hope College and as recommended by the MDEQ, reanalyzed using the EPA Point Count (400 Points) method.

Since only non-destructive sampling methods were employed, FTC&H was unable to collect samples from transite counter tops, fire doors, 1' x 1' glued-on ceiling tile (white with pinholes and fissures), and glue pods attached to 1' x 1' glued-on ceiling tile. These materials should be treated as suspect ACM until samples can be collected.

Mechanical systems were identified and sampled independently as best as could be determined in the field. Fitting insulation was considered a specific part of a mechanical system depending upon the type of insulation (e.g., fiberglass, aircell, mag, etc.).

## RESULTS

A total of 29 unique homogeneous materials were identified during the inspection, resulting in 41 samples collected and 64 analyses (including layers). As a result, 7 homogeneous materials were found to be asbestos containing (greater than 1% asbestos by weight). Two homogeneous materials were found to contain a detectable level of asbestos less than 1% asbestos, and were re-analyzed using the EPA Point Count (400 Points) method. These homogeneous materials were confirmed to contain less than 1% asbestos by weight.

Table 1 identifies the homogeneous materials found as a result of the inspection and their corresponding identification number. Table 2 describes each of the sample locations and whether the sample contains asbestos. Table 3 identifies the location and quantities of ACM, and Table 4 is a summary of the asbestos-containing homogeneous materials.

## CONCLUSIONS

On May 30, 2007, FTC&H conducted an asbestos inspection of Vander Werf Hall located at 27 Graves Place, Holland, Michigan. Seven of the 26 unique homogeneous materials submitted for laboratory analysis were found to contain greater than 1% asbestos by weight. Two additional materials had a detectable level of asbestos of less than 1% by weight, and were submitted for EPA Point Count (400 points) analysis. These materials were confirmed to contain less than 1% asbestos by weight. A total of 9 materials were found to contain asbestos at greater than 1% asbestos by weight (fire doors and transite countertops were assumed to be asbestos containing). 1' x 1' Glued-on ceiling tile-white with pinholes and fissures, and glue pods attached to 1' x 1' glued-on ceiling tile were not sampled and should be treated as suspect ACM until samples can be collected.

# Figures

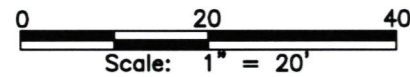
..\\REF\\VANWPLE.DWG

..\\REF\\B-11X17  
..\\REF\\G0007453E.DWG  
..\\REF\\G0007453E.DWG

PLOT INFO: N:\\07453E\\C0\\Z00107453E.DWG DATE: 9/12/2007 TIME: 11:16:23 AM USER: JM3

LEGEND

VW-5-1 ▲ - SAMPLE LOCATION  
(APPROXIMATE)



**SAMPLE LOCATION MAP**  
GROUND FLOOR

**fic&h**

engineers  
scientists  
architects  
constructors

fishbeck, thompson,  
carr & huber, inc.

Hard copy is  
intended to be  
11"x17" when  
plotted. Scale(s)  
indicated and  
graphic quality may  
not be accurate for  
any other size.

**Hope College - Vanderwerf Hall**  
27 Graves Place, Holland, Michigan

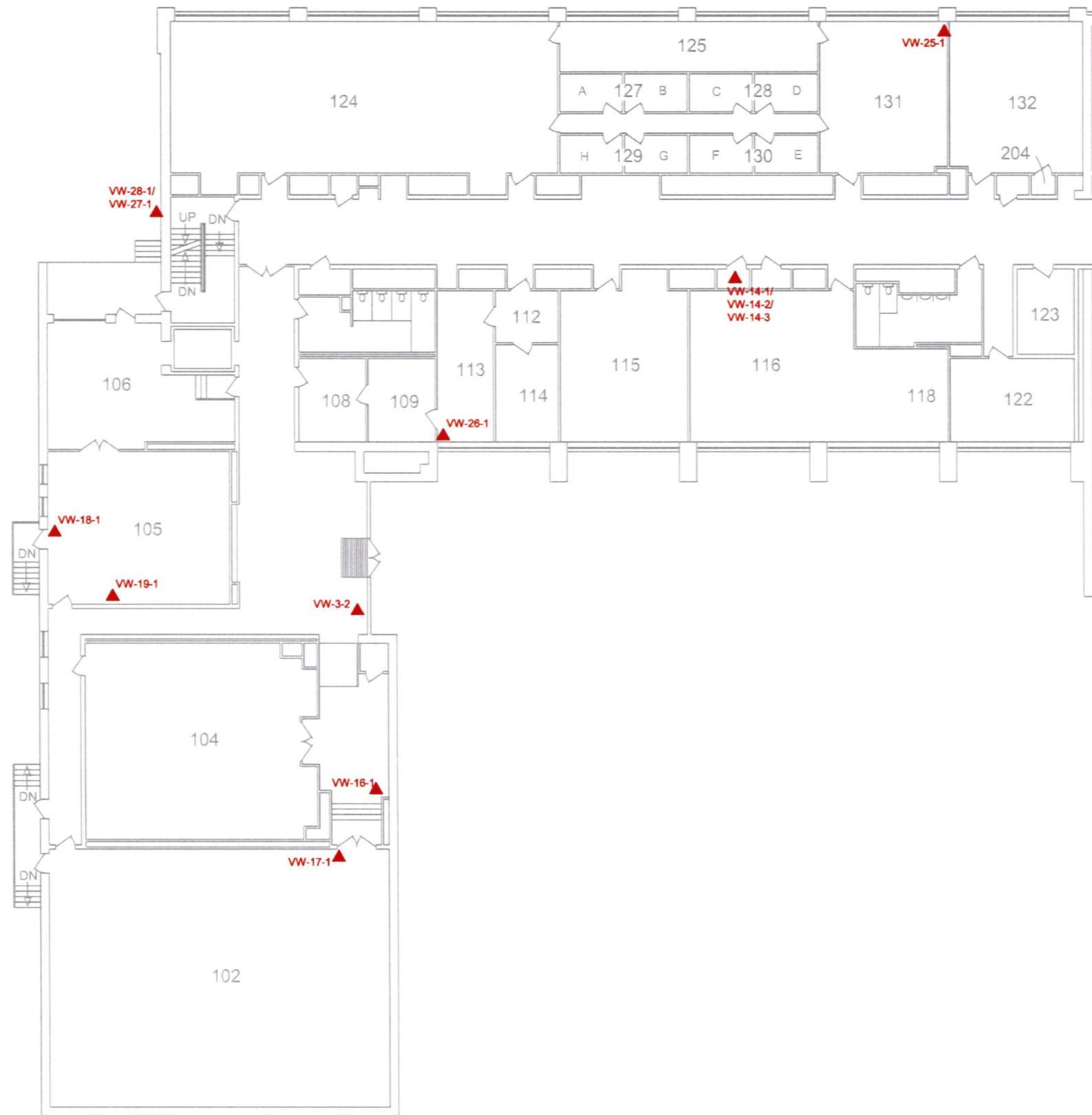
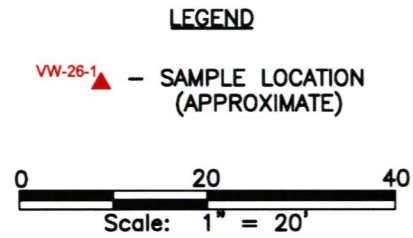
**Asbestos Inspection Report**

PROJECT NO.  
G07453E

FIGURE NO.  
**1**

\\REF\B-11X17  
\\REF\G0007453E.DWG  
\\REF\G0007453E.DWG  
\\REF\VANWYLEN.DWG

PLOT INFO: N:\07453E\CD\200107453E.DWG DATE: 9/12/2007 TIME: 11:18:30 AM USER: JMJ3



**SAMPLE LOCATION MAP**  
FIRST FLOOR

**fi&h**  
engineers  
scientists  
architects  
constructors

fishbeck, thompson,  
carr & huber, inc.

Hard copy is  
intended to be  
11"x17" when  
plotted. Scale(s)  
indicated and  
graphic quality may  
not be accurate for  
any other size.

**Hope College - Vanderwerf Hall**  
27 Graves Place, Holland, Michigan  
**Asbestos Inspection Report**

PROJECT NO.  
G07453E

FIGURE NO.  
**2**

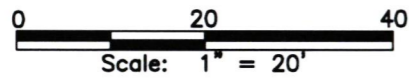
\\REF\VANWYLEN.DWG

\\REF\B-11X17  
\\REF\G007453E.DWG  
\\REF\G007453E.DWG

PLOT INFO: N:\07453E\G0\Z0007453E.DWG DATE: 9/12/2007 TIME: 11:19:09 AM USER: JM3

LEGEND

VW-25-2 ▲ - SAMPLE LOCATION  
(APPROXIMATE)



**SAMPLE LOCATION MAP**  
SECOND FLOOR

**ftc&h**

engineers  
scientists  
architects  
constructors

fishbeck, thompson,  
carr & huber, inc.

Hard copy is  
intended to be  
11"x17" when  
plotted. Scale(s)  
indicated and  
graphic quality may  
not be accurate for  
any other size.

**Hope College - Vanderwerf Hall**

27 Graves Place, Holland, Michigan

**Asbestos Inspection Report**

PROJECT NO.  
G07453E

FIGURE NO.

**3**

# Tables

**Table 1 - Description of Homogeneous Materials**  
**Asbestos Inspection**  
**Hope College-Vander Werf Hall**  
**May 30, 2007**

HA Number	Material Description	Material Type	Asbestos Containing?
VW-1	12" VAT-White with grey and black spots	MM	N
VW-2	2' x 2' Ceiling Tile-White with pinholes	MM	N
VW-3	2' x 2' Ceiling Tile-White with pinholes and fissures	MM	N
VW-4	2' x 2' Ceiling Tile-White with pinholes and long fissures	MM	N
VW-5	Fittings on fiberglass insulated pipe	TSI	Y
VW-6	Plaster	SM	N
VW-7	9" VAT-Beige	MM	Y
VW-8	Vinyl Base-Black	MM	N
VW-9	Vinyl Base-Grey	MM	N
VW-10	Vinyl Base-Brown	MM	N
VW-11	2' x 2' VAT-Brown	MM	N
VW-12	Vinyl Stair Tread-Grey	MM	N
VW-13	Vinyl Stair Tread-Beige	MM	N
VW-14	1' x 1' Glued-On Ceiling Tile-White with pinholes	SM	< 1%
VW-15	Mag Pipe Insulation	TSI	Y
VW-16	1' x 1' Z-Spline Ceiling Tile-White with fissures and pinholes	MM	Y
VW-17	VAT under carpet	MM	Y
VW-18	9" VAT-Off white with brown streaks	MM	Y
VW-19	2' x 2' Ceiling Tile-White with pinholes and large fissures	MM	Y
VW-20	Transite Counter Tops	MM	Assumed
VW-21	2'x4' Ceiling Tile-White with pinholes and fissures	MM	N
VW-22	12" VAT-Various shades of brown	MM	N
VW-23	1' x 1' Glued-On Ceiling Tile-White with pinholes and fissures	SM	Assumed
VW-24	12" VAT-Beige with brown and dark brown streaks	MM	< 1%
VW-25	Drywall and Drywall Joint Compound	SM	N
VW-26	12" VAT-Off white with brown and white streaks	MM	N
VW-27	Masonry caulk	MM	N
VW-28		MM	N
VW-29	Fire Doors and Hatches	MM	Assumed

HA Homogeneous Area  
MM Miscellaneous Material  
TSI Thermal System Insulation  
SM Surfacing Material  
VAT Vinyl Asbestos Tile

**Table 2 - Bulk Sample Location Log**  
**Asbestos Inspection**  
**Hope College-Vander Werf Hall**  
**May 30, 2007**

HA Number	Sample Location	Asbestos %	Notes
VW-1-1A	Room 17/21	None Detected	Tile
VW-1-1B	2' x 2' Ceiling Tile-White with pinholes	None Detected	Mastic
VW-2-1	2' x 2' Ceiling Tile-White with pinholes and fissures	None Detected	
VW-3-1	2' x 2' Ceiling Tile-White with pinholes and long fissures	None Detected	
VW-3-2	1st floor vestibule	None Detected	
VW-4-1	Room 17/21	None Detected	
VW-5-1	Room 22	3% Chrysotile	
VW-5-2	Crawl space by room 202, piping	Not Analyzed	Stopped at 1st positive
VW-5-3	Access panel in ground floor hall adjacent to men's restroom	Not Analyzed	Stopped at 1st positive
VW-6-1A	Room 11	None Detected	Drywall
VW-6-1B	2' x 2' VAT-Brown	None Detected	Finish coat
VW-6-1C	Room 11	None Detected	Brown coat
VW-6-2A	Room 14	None Detected	Drywall
VW-6-2B	1' x 1' Glued-On Ceiling Tile-White with pinholes	None Detected	Finish coat
VW-6-2C	Room 14	None Detected	Brown coat
VW-6-3A	1' x 1' Z-Spline Ceiling Tile-White with fissures and pinholes	None Detected	Drywall
VW-6-3B	Room 15	None Detected	Finish coat
VW-6-3C	Room 15	None Detected	Brown coat
VW-6-4A	2' x 2' Ceiling Tile-White with pinholes and large fissures	None Detected	Drywall
VW-6-4B	Room 219	None Detected	Finish coat
VW-6-4C	Room 219	None Detected	Brown coat
VW-6-5A	Room 217B	None Detected	Drywall
VW-6-5B	1' x 1' Glued-On Ceiling Tile-White with pinholes and fissures	None Detected	Finish coat
VW-6-5C	Room 217B	None Detected	Brown coat
VW-6-6A	Room 210	None Detected	Drywall
VW-6-6B	Room 210	None Detected	Finish coat
VW-6-6C	Room 210	None Detected	Brown coat
VW-6-7A		None Detected	Drywall
VW-6-7B	Room 237	None Detected	Finish coat
VW-6-7C	Room 237	None Detected	Brown coat
		5% Chrysotile	Tile
		None Detected	Mastic
		None Detected	
		None Detected	
VW-10-1A	West Stairwell	None Detected	Tile
VW-10-1B	West Stairwell	None Detected	Mastic
VW-11-1	West Stairwell	None Detected	
VW-12-1	West Stairwell	None Detected	
VW-13-1	West Stairwell	None Detected	
VW-14-1	1st Floor phone closet	< 1% Chrysotile	
VW-14-2	1st Floor phone closet	< 1% Chrysotile	
VW-14-3	1st Floor phone closet	< 1% Chrysotile	
VW-15-1	Room 22	15% Amosite	
VW-15-1	Room 22	5% Chrysotile	
VW-15-2	East-west tunnel	Not Analyzed	Stopped at 1st positive
VW-15-3	Room 22	Not Analyzed	Stopped at 1st positive
VW-16-1	Hallway outside rooms 102 - 104	5% Amosite	
VW-17-1A	Room 102	4% Chrysotile	Tile
VW-17-1B	Room 102	None Detected	Mastic
VW-18-1A	Room 105	6% Chrysotile	Tile
VW-18-1B	Room 105	None Detected	Mastic
VW-19-1	Room 105	10% Amosite	
VW-20	No sample collected	Not Analyzed	Transite counter tops assumed positive
VW-21-1	Room 14/15	None Detected	
VW-22-1	Room 14	None Detected	
VW-23	No sample collected	Not Analyzed	Ceiling tile and glue pods assumed positive
VW-24-1A	Room 6	< 1% Chrysotile	Tile
VW-24-1B	Room 6	None Detected	Mastic
VW-25-1A	Room 131	None Detected	Drywall
VW-25-1B	Room 131	None Detected	Joint compound
VW-25-2A	Room 219, column	None Detected	Drywall
VW-25-2B	Room 219, column	None Detected	Joint compound
VW-25-3A	Room 234, walls	None Detected	Drywall
VW-25-3B	Room 234, walls	None Detected	Joint compound
VW-26-1	Room 113	None Detected	
VW-27-1	Exterior west end	None Detected	
VW-28-1	Exterior west end	None Detected	
VW-29	No sample collected	Not Analyzed	Fire doors and hatches assumed positive

HA Homogeneous Area  
VAT Vinyl Asbestos Tile

Table 3 - Room-By-Room Locations of Asbestos Containing Materials  
Asbestos Inspection  
Hope College-Vander Weir Hall  
Mar 30, 2007

Location I.D. (Room Number)	5	14	15	16	17	18	19	20	23	24	29
1st Floor											27
1st Floor hallway		1,500									
2nd Floor											11
2nd Floor hallway											
2nd Floor hallway		1,500									
2nd Floor in rooms											
Access hatch near room 131		1 SM									
Access hatch near room 223		1									
Access hatch near room 227		5									
Access hatch, 1st floor near mens restroom		6									
Access hatch, ground floor near mens restroom		12									
East hallway outside rooms 102 and 104											
East west tunnel	700		120	360	300						13
Ground floor											
Ground floor hallway		1,500									
Hallway outside room 129		160									
Hallway outside room 4									25		
Hallway outside rooms 105					400						
Phone closet 1st floor near room 115		12	12								
Room 10	8										
Room 102					1,900						
Room 104					1,140						
Room 105	6										
Room 105						672	672	304			
Room 109/109	3				240						
Room 11 - 15	20	1,408						200			
Room 112 - 114	6										
Room 116	6							100			
Room 122								62			
		304						848			
		400	200					50			
		440						600			
								52			
Room 132											
Room 17 - 20	6										
Room 18		80									
Room 203	3							40			
Room 21	120										
Room 22	8	345									
Room 3	3										
Room 4	3										
Room 5	3										
Room 6	1										
Room 7	1	20	20					960		100	
Storage room near 115											
Tunnel off room 5	221										
West hallway outside rooms					375						
Totals	1,139 ea.	11,104 s.f.	4,862 s.f.	485 l.f.	360 s.f.	672 s.f.	1,672 s.f.	13,216 s.f.	28 s.f.	100 s.f.	61 ea.

Notes:  
s.f. = square feet  
l.f. = linear feet  
ea. = each

**Table 4 - Summary of Asbestos Containing Homogeneous Materials**  
**Asbestos Inspection**  
**Hope College-Vander Werf Hall**  
**May 30, 2007**

HA Number	Material Description	Asbestos Containing?	Quantity	Unit
VW-5	2' x 2' Ceiling Tile-White with pinholes and long fissures	Y	1,139	ea.
VW-7	9" VAT-Beige	Y	11,104	s.f.
VW-14	1'x1' Glued-On Ceiling Tile-White with pinholes	< 1%	4,892	s.f.
VW-15	1' x 1' Glued-On Ceiling Tile-White with pinholes	Y	465	l.f.
VW-16	1' x 1' Z-Spline Ceiling Tile-White with fissures and pinholes	Y	360	s.f.
VW-17	1' x 1' Z-Spline Ceiling Tile-White with fissures and pinholes	Y	4,355	s.f.
VW-18	9" VAT-Off white with brown streaks	Y	672	s.f.
VW-19	2' x 2' Ceiling Tile-White with pinholes and large fissures	Y	672	s.f.
VW-20	2' x 2' Ceiling Tile-White with pinholes and large fissures	Assumed	3,216	s.f.
VW-23	1' x 1' Glued-On Ceiling Tile-White with pinholes and fissures	Assumed	25	s.f.
VW-24	1' x 1' Glued-On Ceiling Tile-White with pinholes and fissures	< 1%	100	s.f.
VW-29		Assumed	51	ea.

**Notes:**

ea. = each

HA = Homogeneous Area

l.f. = linear feet

s.f. = square feet

VAT = Vinyl Asbestos Tile

# Appendix

**EMSL Analytical, Inc.**

212 South Wagner Road, Ann Arbor, MI 48103

Phone: (734) 668-6810 Fax: 7346688532 Email: [annarborlab@emsl.com](mailto:annarborlab@emsl.com)

Attn: **Dave Lutkenhoff**  
**Fishbeck, Thompson, Carr & Huber**  
**1515 Arboretum Drive SE**  
**Grand Rapids, MI 49546**

Fax (616) 464-3992 Phone: (616) 464-3749  
Project: Hope College- Vanderuerf Hall G07463

Customer ID: FTCH62  
Customer PO:  
Received: 06/05/07 10:00 AM  
EMSL Order: 080701723

EMSL Proj:  
Analysis Date: 6/6/2007  
Report Date: 6/6/2007

**Asbestos Analysis of Bulk Materials via EPA 600/R-93/116 Method using Polarized  
Light Microscopy**

Sample	Location	Appearance	Non-Asbestos		Asbestos
			% Fibrous	% Non-Fibrous	% Type
VW-1-1A 080701723-0001	Tile	White/Gray Non-Fibrous Heterogeneous		100% Non-fibrous (other)	None Detected
VW-1-1B 080701723-0001A	Mastic	Tan Fibrous Heterogeneous	2% Cellulose	98% Non-fibrous (other)	None Detected
VW-2-1 080701723-0002		White/Tan Fibrous Heterogeneous	5% Cellulose 25% Glass	70% Non-fibrous (other)	None Detected
VW-3-1 080701723-0003		Gray Fibrous Heterogeneous	10% Cellulose 80% Min.Wool	30% Non-fibrous (other)	None Detected
VW-4-1 080701723-0004		Gray Fibrous Heterogeneous	15% Cellulose 45% Min.Wool	40% Non-fibrous (other)	None Detected
VW-5-1 080701723-0005		Gray Fibrous Heterogeneous		97% Non-fibrous (other)	3% Chrysotile
VW-5-2 080701723-0006		Gray Fibrous Heterogeneous			Stop Positive (Not Analyzed)
VW-5-3 080701723-0007		Gray Fibrous Heterogeneous			Stop Positive (Not Analyzed)

Analyst(s)

Orlando J. Ivey II (64)

or other approved signatory

Due to magnification limitations inherent in PLM, asbestos fibers in dimensions below the resolution capability of PLM may not be detected. Samples reported as <1% or none detected may require additional testing by TEM to confirm asbestos quantifies. The above test report relates only to the items tested and may not be reproduced in any form without the express written approval of EMSL Analytical, Inc. EMSL's liability is limited to the cost of analysis. EMSL bears no responsibility for sample collection activities or analytical method limitations. Interpretation and use of test results are the responsibility of the client. The test results contained within this report meet the requirements of NELAP unless otherwise noted. Samples received in good condition unless otherwise noted.

Analysis performed by EMSL Ann Arbor (NVLAP #101048-4)

**EMSL Analytical, Inc.**

212 South Wagner Road, Ann Arbor, MI 48103

Phone: (734) 668-6810 Fax: 7346688532 Email: [annarborlab@emsl.com](mailto:annarborlab@emsl.com)

Attn: **Dave Lutkenhoff**  
**Fishbeck, Thompson, Carr & Huber**  
**1515 Arboretum Drive SE**  
**Grand Rapids, MI 49546**

Fax: (616) 464-3992 Phone: (616) 464-3749  
Project: Hope College- Vanderuerf Hall G07453

Customer ID: FTCH62  
Customer PO:  
Received: 06/05/07 10:00 AM  
EMSL Order: 080701723

EMSL Proj:  
Analysis Date: 6/6/2007  
Report Date: 6/6/2007

**Asbestos Analysis of Bulk Materials via EPA 600/R-93/116 Method using Polarized  
Light Microscopy**

Sample	Location	Appearance	Non-Asbestos		Asbestos
			% Fibrous	% Non-Fibrous	% Type
VW-6-1A 080701723-0008	Dry Wall	Gray Fibrous Heterogeneous	60% Cellulose	40% Non-fibrous (other)	None Detected
VW-6-1B 080701723-0008A	Finish Coat	White Non-Fibrous Heterogeneous		100% Non-fibrous (other)	None Detected
VW-6-1C 080701723-0008B	Brown Coat	Gray Fibrous Heterogeneous	2% Cellulose	98% Non-fibrous (other)	None Detected
VW-6-2A 080701723-0009	Drywall	Gray Fibrous Heterogeneous	65% Cellulose	35% Non-fibrous (other)	None Detected
VW-6-2B 080701723-0009A	Finish coat	White Non-Fibrous Heterogeneous		100% Non-fibrous (other)	None Detected
VW-6-2C 080701723-0009B	Brown coat	Gray Fibrous Heterogeneous	3% Cellulose	97% Non-fibrous (other)	None Detected
VW-6-3A 080701723-0010	Drywall	Gray Fibrous Heterogeneous	70% Cellulose	30% Non-fibrous (other)	None Detected
VW-6-3B 080701723-0010A	Finish coat	White Non-Fibrous Heterogeneous		100% Non-fibrous (other)	None Detected

Analyst(s)

Orlando J. Ivey II (64)

or other approved signatory

Due to magnification limitations inherent in PLM, asbestos fibers in dimensions below the resolution capability of PLM may not be detected. Samples reported as <1% or none detected may require additional testing by TEM to confirm asbestos quantities. The above test report relates only to the items tested and may not be reproduced in any form without the express written approval of EMSL Analytical, Inc. EMSL's liability is limited to the cost of analysis. EMSL bears no responsibility for sample collection activities or analytical method limitations. Interpretation and use of test results are the responsibility of the client. The test results contained within this report meet the requirements of NELAP unless otherwise noted. Samples received in good condition unless otherwise noted.

Analysis performed by EMSL Ann Arbor (NVLAP #101048-6)

**EMSL Analytical, Inc.**

212 South Wagner Road, Ann Arbor, MI 48103

Phone: (734) 668-6810 Fax: 734-668-6832 Email: [annarborlab@emsl.com](mailto:annarborlab@emsl.com)

Attn: **Dave Lutkenhoff**  
**Fishbeck, Thompson, Carr & Huber**  
**1516 Arboretum Drive SE**  
**Grand Rapids, MI 49546**

Fax: (616) 484-3982 Phone: (616) 484-3749  
 Project: Hope College- Vanderuwerf Hall G07463

Customer ID: FTCH62  
 Customer PO:  
 Received: 08/05/07 10:00 AM  
 EMSL Order: 080701723

EMSL Proj:  
 Analysis Date: 6/6/2007  
 Report Date: 6/6/2007

### Asbestos Analysis of Bulk Materials via EPA 600/R-93/116 Method using Polarized Light Microscopy

Sample	Location	Appearance	Non-Asbestos		Asbestos
			% Fibrous	% Non-Fibrous	% Type
VW-6-3C 080701723-0010B	Brown coat	Gray Fibrous Heterogeneous	2% Cellulose	98% Non-fibrous (other)	None Detected
VW-6-4A 080701723-0011	Drywall	Gray Fibrous Heterogeneous	50% Cellulose	50% Non-fibrous (other)	None Detected
VW-6-4B 080701723-0011A	Finish coat	Black Non-Fibrous Heterogeneous		100% Non-fibrous (other)	None Detected
VW-6-4C 080701723-0011B	Brown coat	Gray Fibrous Heterogeneous	4% Cellulose	96% Non-fibrous (other)	None Detected
VW-6-5A 080701723-0012	Drywall	Gray Fibrous Heterogeneous	60% Cellulose	40% Non-fibrous (other)	None Detected
VW-6-5B 080701723-0012A	Finish coat	White Non-Fibrous Heterogeneous		100% Non-fibrous (other)	None Detected
VW-6-5C 080701723-0012B	Brown coat	Gray Fibrous Heterogeneous	2% Cellulose	98% Non-fibrous (other)	None Detected
VW-6-6A 080701723-0013	Drywall	Gray Fibrous Heterogeneous	45% Cellulose	55% Non-fibrous (other)	None Detected

Analyst(s)

Orlando J. Ivey II (64)

or other approved signatory

Due to magnification limitations inherent in PLM, asbestos fibers in dimensions below the resolution capability of PLM may not be detected. Samples reported as <1% or none detected may require additional testing by TEM to confirm asbestos quantiles. The above test report relates only to the items tested and may not be reproduced in any form without the express written approval of EMSL Analytical, Inc. EMSL's liability is limited to the cost of analysis. EMSL bears no responsibility for sample collection activities or analytical method limitations. Interpretation and use of test results are the responsibility of the client. The test results contained within this report set the requirements of NELAP unless otherwise noted. Samples received in good condition unless otherwise noted.

Analysis performed by EMSL Ann Arbor (NVLAP #101048-4)

**EMSL Analytical, Inc.**

212 South Wagner Road, Ann Arbor, MI 48103

Phone: (734) 668-6810 Fax: 7346688532 Email: [annarborlab@emsl.com](mailto:annarborlab@emsl.com)

Attn: **Dave Lutkenhoff**  
**Fishbeck, Thompson, Carr & Huber**  
**1515 Arboretum Drive SE**  
**Grand Rapids, MI 49546**

Fax: (616) 464-3992 Phone: (616) 464-3749  
 Project: Hope College- Vanderuerr Hall G07453

Customer ID: FTCH62  
 Customer PO:  
 Received: 06/05/07 10:00 AM  
 EMSL Order: 080701723

EMSL Proj:  
 Analysis Date: 6/6/2007  
 Report Date: 6/6/2007

### Asbestos Analysis of Bulk Materials via EPA 600/R-93/116 Method using Polarized Light Microscopy

Sample	Location	Appearance	Non-Asbestos		Asbestos
			% Fibrous	% Non-Fibrous	% Type
VW-6-6B 080701723-0013A	Finish coat	White Non-Fibrous Heterogeneous		100% Non-fibrous (other)	None Detected
VW-6-6C 080701723-0013B	Brown coat	Gray Fibrous Heterogeneous	2% Cellulose	98% Non-fibrous (other)	None Detected
VW-6-7A 080701723-0014	Drywall	Tan/White Non-Fibrous Heterogeneous	45% Cellulose	55% Non-fibrous (other)	None Detected
VW-6-7B 080701723-0014A	Finish coat	Gray/White Non-Fibrous Heterogeneous		100% Non-fibrous (other)	None Detected
VW-6-7C 080701723-0014B	Brown coat	Gray Fibrous Heterogeneous	3% Cellulose	97% Non-fibrous (other)	None Detected
VW-7-1A 080701723-0015	Tile	Gray  Heterogeneous		95% Non-fibrous (other)	5% Chrysotile
VW-7-1B 080701723-0015A	Mastic	Black Fibrous Heterogeneous	2% Cellulose	98% Non-fibrous (other)	None Detected
VW-8-1 080701723-0016		Black Fibrous Heterogeneous	3% Cellulose	97% Non-fibrous (other)	None Detected

Analyst(s)

Orlando J. Ivey II (64)

or other approved signatory

Due to magnification limitations inherent in PLM, asbestos fibers in dimensions below the resolution capability of PLM may not be detected. Samples reported as <1% or none detected may require additional testing by TEM to confirm asbestos quantities. The above test report relates only to the items tested and may not be reproduced in any form without the express written approval of EMSL Analytical, Inc. EMSL's liability is limited to the costs of analysis. EMSL bears no responsibility for sample collection activities or analytical method limitations. Interpretation and use of test results are the responsibility of the client. The test results contained within this report meet the requirements of NELAP unless otherwise noted. Samples received in good condition unless otherwise noted.

Analysis performed by EMSL Ann Arbor (NVLAP #101048-4)

**EMSL Analytical, Inc.**

212 South Wagner Road, Ann Arbor, MI 48103

Phone: (734) 666-6910 Fax: 7346688532 Email: [annarbor@emsl.com](mailto:annarbor@emsl.com)

Attn: **Dave Lutkenhoff**  
**Fishbeck, Thompson, Carr & Huber**  
**1515 Arboretum Drive SE**  
**Grand Rapids, MI 49546**

Fax: (616) 464-3992 Phone: (616) 464-3749  
 Project: Hope College- Vanderuwerf Hall G07463

Customer ID: FTCH62  
 Customer PO:  
 Received: 06/05/07 10:00 AM  
 EMSL Order: 080701723

EMSL Proj:  
 Analysis Date: 6/6/2007  
 Report Date: 6/6/2007

### Asbestos Analysis of Bulk Materials via EPA 600/R-93/116 Method using Polarized Light Microscopy

Sample	Location	Appearance	Non-Asbestos		Asbestos
			% Fibrous	% Non-Fibrous	% Type
VW-9-1 080701723-0017		Gray Fibrous Heterogeneous	2% Cellulose	98% Non-fibrous (other)	None Detected
VW-10-1A 080701723-0018	Tile	Gray Fibrous Heterogeneous	2% Cellulose	98% Non-fibrous (other)	None Detected
VW-10-1B 080701723-0018A	Mastic	Tan Non-Fibrous Heterogeneous		100% Non-fibrous (other)	None Detected
VW-11-1 080701723-0019		Beige/Gray Fibrous Heterogeneous	2% Cellulose	98% Non-fibrous (other)	None Detected
VW-12-1 080701723-0020		Tan Fibrous Heterogeneous	2% Cellulose	98% Non-fibrous (other)	None Detected
VW-13-1 080701723-0021		Tan Fibrous Heterogeneous	3% Cellulose	97% Non-fibrous (other)	None Detected
VW-14-1 080701723-0022		Brown Fibrous Heterogeneous	8% Cellulose	92% Non-fibrous (other)	<1% Chrysotile
VW-14-2 080701723-0023		Brown Fibrous Heterogeneous	10% Cellulose	90% Non-fibrous (other)	<1% Chrysotile

Analyst(s)

Orlando J. Ivey II (64)

or other approved signatory

Due to magnification limitations inherent in PLMA asbestos fibers in dimensions below the resolution capability of PLM may not be detected. Samples reported as <1% or none detected may require additional testing by TEM to confirm asbestos quantities. The above test report relates only to the items tested and may not be reproduced in any form without the express written approval of EMSL Analytical, Inc. EMSL's liability is limited to the cost of analysis. EMSL bears no responsibility for sample collection activities or analytical method limitations. Interpretation and use of test results are the responsibility of the client. The test results contained within this report set the requirements of NELAP unless otherwise noted. Samples received in good condition unless otherwise noted.

Analysis performed by EMSL Ann Arbor (NVLAP #101048-4)

**EMSL Analytical, Inc.**

212 South Wagner Road, Ann Arbor, MI 48103

Phone: (734) 666-6810 Fax: 734-668-6532 Email: [annarbordab@emsl.com](mailto:annarbordab@emsl.com)

Attn: **Dave Lutkenhoff**  
**Fishbeck, Thompson, Carr & Huber**  
**1515 Arboretum Drive SE**  
**Grand Rapids, MI 49546**

Fax (616) 464-3892 Phone: (616) 464-3749  
Project: Hope College- Vanderuerr Hall G07483

Customer ID: FTCH62  
Customer PO:  
Received: 06/05/07 10:00 AM  
EMSL Order: 060701723

EMSL Proj:  
Analysis Date: 6/6/2007  
Report Date: 6/6/2007

**Asbestos Analysis of Bulk Materials via EPA 600/R-93/116 Method using Polarized  
Light Microscopy**

Sample	Location	Appearance	Non-Asbestos		Asbestos
			% Fibrous	% Non-Fibrous	% Type
VW-14-3 060701723-0024		Brown Fibrous Heterogeneous	10% Cellulose	90% Non-fibrous (other)	<1% Chrysotile
VW-15-1 060701723-0025		Gray Fibrous Heterogeneous		80% Non-fibrous (other)	15% Amosite 6% Chrysotile
VW-15-2 060701723-0026					Stop Positive (Not Analyzed)
VW-15-3 060701723-0027					Stop Positive (Not Analyzed)
VW-16-1 060701723-0028		Gray Fibrous Heterogeneous	90% Min.Wool	5% Non-fibrous (other)	5% Amosite
VW-17-1A 060701723-0029	Tile	Gray Fibrous Heterogeneous		96% Non-fibrous (other)	4% Chrysotile
VW-17-1B 060701723-0029A	Mastic	Black Fibrous Heterogeneous	2% Cellulose	98% Non-fibrous (other)	None Detected
VW-18-1A 060701723-0030	Tile	Gray Fibrous Heterogeneous		94% Non-fibrous (other)	6% Chrysotile

Analyst(s)

Orlando J. Ivey II (64)

or other approved signatory

Due to magnification limitations inherent in PLM, asbestos fibers in dimensions below the resolution capability of PLM may not be detected. Samples reported as <1% or none detected may require additional testing by TEM to confirm asbestos quantities. The above test report relates only to the items tested and may not be reproduced in any form without the express written approval of EMSL Analytical, Inc. EMSL's liability is limited to the cost of analysis. EMSL bears no responsibility for sample collection activities or analytical method limitations. Interpretation and use of test results are the responsibility of the client. The test results contained within this report set the requirements of NELAP unless otherwise noted. Samples received in good condition unless otherwise noted.

Analysis performed by EMSL Ann Arbor (NVLAP #101048-4)

**EMSL Analytical, Inc.**

212 South Wagner Road, Ann Arbor, MI 48103

Phone: (734) 666-6810 Fax: 734-668-8532 Email: [annarborlab@emsl.com](mailto:annarborlab@emsl.com)

Attn: **Dave Lutkenhoff**  
**Fishbeck, Thompson, Carr & Huber**  
**1515 Arboretum Drive SE**  
**Grand Rapids, MI 49546**

Fax (616) 464-3992 Phone: (616) 464-3749  
 Project: Hope College- Vanderuerr Hall G07483

Customer ID: FTCH62  
 Customer PO:  
 Received: 06/05/07 10:00 AM  
 EMSL Order: 080701723

EMSL Proj:  
 Analysis Date: 6/6/2007  
 Report Date: 6/6/2007

### Asbestos Analysis of Bulk Materials via EPA 600/R-93/116 Method using Polarized Light Microscopy

Sample	Location	Appearance	Non-Asbestos		Asbestos
			% Fibrous	% Non-Fibrous	% Type
VW-18-1B 080701723-0030A	Mastic	Black Fibrous Heterogeneous	4% Cellulose	96% Non-fibrous (other)	None Detected
VW-19-1 080701723-0031		Beige/Gray Fibrous Heterogeneous	5% Cellulose 80% Min.W ool	5% Non-fibrous (other)	10% Amosite
VW-21-1 080701723-0032		White/Gray Fibrous Heterogeneous	5% Cellulose 30% Min.W ool	65% Non-fibrous (other)	None Detected
VW-22-1 080701723-0033		Gray Non-Fibrous Heterogeneous		100% Non-fibrous (other)	None Detected
VW-24-1A 080701723-0034	Tile	Gray Fibrous Heterogeneous	0% Cellulose	100% Non-fibrous (other)	<1% Chrysotile
VW-24-1B 080701723-0034A	Mastic	Tan Fibrous Heterogeneous	2% Cellulose	98% Non-fibrous (other)	None Detected
VW-25-1A 080701723-0035	Drywall	Gray Fibrous Heterogeneous	80% Cellulose	20% Non-fibrous (other)	None Detected
VW-25-1B 080701723-0035A	Joint compound	White Fibrous Heterogeneous	2% Cellulose	98% Non-fibrous (other)	None Detected

Analyst(s)

Orlando J. Ivey II (64)

or other approved signatory

Due to magnification limitations inherent in PLM, asbestos fibers in dimensions below the resolution capability of PLM may not be detected. Samples reported as <1% or none detected may require additional testing by TEM to confirm asbestos quantities. The above test report relates only to the items tested and may not be reproduced in any form without the express written approval of EMSL Analytical, Inc. EMSL's liability is limited to the cost of analysis. EMSL bears no responsibility for sample collection activities or analytical method limitations. Interpretation and use of test results are the responsibility of the client. The test results contained within this report meet the requirements of NELAP unless otherwise noted. Samples received in good condition unless otherwise noted.

Analysis performed by EMSL Ann Arbor (NVLAP #101048-4)

**EMSL Analytical, Inc.**

212 South Wagner Road, Ann Arbor, MI 48103

Phone: (734) 668-6810 Fax: 734-668-6832 Email: [annarborlab@emsl.com](mailto:annarborlab@emsl.com)

Attn: **Dave Lutkenhoff**  
**Fishbeck, Thompson, Carr & Huber**  
**1515 Arboretum Drive SE**  
**Grand Rapids, MI 49546**

Fax: (616) 464-3992 Phone: (616) 464-3749  
 Project: Hope College- Vanderuerr Hall G07463

Customer ID: FTCH62  
 Customer PO:  
 Received: 08/05/07 10:00 AM  
 EMSL Order: 080701723

EMSL Proj:  
 Analysis Date: 6/6/2007  
 Report Date: 6/6/2007

### Asbestos Analysis of Bulk Materials via EPA 600/R-93/116 Method using Polarized Light Microscopy

Sample	Location	Appearance	Non-Asbestos		Asbestos
			% Fibrous	% Non-Fibrous	% Type
VW-25-2A 080701723-0036	Drywall	Gray Fibrous Heterogeneous	70% Cellulose  Inconclusive	30% Non-fibrous (other)	None Detected
VW-25-2B 080701723-0036A	Joint compound	White Fibrous Heterogeneous	3% Cellulose	97% Non-fibrous (other)	None Detected
VW-25-3A 080701723-0037	Drywall	Gray Fibrous Heterogeneous	60% Cellulose	40% Non-fibrous (other)	None Detected
VW-25-3B 080701723-0037A	Joint compound	White Fibrous Heterogeneous	2% Cellulose	98% Non-fibrous (other)	None Detected
VW-26-1 080701723-0038	Tile	Gray Fibrous Heterogeneous		100% Non-fibrous (other)	None Detected
VW-27-1 080701723-0039		Gray Non-Fibrous Heterogeneous		100% Non-fibrous (other)	None Detected
VW-28-1 080701723-0040		Gray Non-Fibrous Heterogeneous		100% Non-fibrous (other)	None Detected
VW-3-2 080701723-0041		Gray Fibrous Heterogeneous	15% Cellulose 65% Min.Wool	20% Non-fibrous (other)	None Detected

Analyst(s)

Orlando J. Ivey II (64)

or other approved signatory

Due to magnification limitations inherent in PLM, asbestos fibers in dimensions below the resolution capability of PLM may not be detected. Samples reported as <1% or none detected may require additional testing by TEM to confirm asbestos quantities. The above test report relates only to the items tested and may not be reproduced in any form without the express written approval of EMSL Analytical, Inc. EMSL's liability is limited to the cost of analysis. EMSL bears no responsibility for sample collection activities or analytical method limitations. Interpretation and use of test results are the responsibility of the client. The test results contained within this report meet the requirements of NELAP unless otherwise noted. Samples received in good condition unless otherwise noted.

Analysis performed by EMSL Ann Arbor (NVLAP #101048-4)

**EMSL Analytical, Inc.**

212 South Wagner Road, Ann Arbor, MI 48103

Phone: (734) 666-6810 Fax: 734-668-8532 Email: [annarborlab@emsl.com](mailto:annarborlab@emsl.com)

Attn: **Dave Lutkenhoff**  
**Fishbeck, Thompson, Carr & Huber**  
**1515 Arboretum Drive SE**  
**Grand Rapids, MI 49546**

Fax: (616) 464-3982 Phone: (616) 464-3749  
Project: Hope College- Vanderuurf Hall G07463

Customer ID: FTCH62  
Customer PO:  
Received: 08/05/07 10:00 AM  
EMSL Order: 080701723

EMSL Proj:  
Analysis Date: 8/8/2007  
Report Date: 8/8/2007

**Asbestos Analysis of Bulk Materials via EPA 600/R-93/116 Method using Polarized  
Light Microscopy**

Sample	Location	Appearance	Non-Asbestos		Asbestos
			% Fibrous	% Non-Fibrous	% Type

Analyst(s)

Orlando J. Ivey II (64)

or other approved signatory

Due to magnification limitations inherent in PLM, asbestos fibers in dimensions below the resolution capability of PLM may not be detected. Samples reported as <1% or none detected may require additional testing by TEM to confirm asbestos quantities. The above test report relates only to the items tested and may not be reproduced in any form without the express written approval of EMSL Analytical, Inc. EMSL's liability is limited to the cost of analysis. EMSL bears no responsibility for sample collection activities or analytical method limitations. Interpretation and use of test results are the responsibility of the client. The test results contained within this report meet the requirements of NELAP unless otherwise noted. Samples received in good condition unless otherwise noted.

Analysis performed by EMSL Ann Arbor (NVLAP #101048-4)



107 Haddon Avenue, Westmont, New Jersey 08108

1-800-220-3675

http://www.emsl.com

## EMSL ANALYTICAL, Inc.

## CHAIN OF CUSTODY

EMSL Rep:

Third Party Billing requires written  
authorization from third party

Your Name:

Company:

Street:

Box #:

City/State:

email

Phone Results to:

Name:

Telephone#:

Project Name/Number:

EMSL-Bill to:

Street:

Box #:

City/State:

Fax Results to:

Name:

Fax #:

Purchase Order #:

FTC + H  
1515 ARBORETUM DR.  
GRAND RAPIDS MI 49546mcdavies@ftch.com  
Hope college - Vaneruef  
Hall - 607153SIME  
Street:  
Box #:  
City/State: Zip:DAVE LUTKENHOFF  
616.464.3992

## TURNAROUND TIME

☐ 3 Hours ☐ 6 Hours ☐ 12 Hours ☒ 24 Hours ☐ 48 Hours ☐ 72 Hours ☐ 4 Days ☐ 5 Days ☐ 6-10 Days

## SAMPLE MATRIX

☐ Air ☒ Bulk ☐ Soil ☐ Wipe ☐ Micro-Vac ☐ Drinking Water ☐ Wastewater ☐ Chills ☐ Other

## ASBESTOS ANALYSIS

## PCM - Air

☐ NIOSH 7400 (A) Issue 2, August 1994☐ OSHA w/TWA

## TEM AIR

☐ AHERA 40 CFR, Part 763 Subpart E☐ NIOSH 7402 Issue 2☐ EPA Level II

## PLM - Bulk

☒ EPA 600/R-93/116☐ NY Stratified Point Count☐ California Air Resource Board (CARB) 435☐ NIOSH 9002☐ PLM NOB (Gravimetric) NYS 198.1☐ EPA Point Count (400 Points)☐ EPA Point Count (1,000 Points)☐ Standard Addition Point Count

## SOILS

☒ EPA Protocol Qualitative☐ EPA Protocol Quantitative☐ EMSL MSD 9000 Method fibers/gram☐ Superfund EPA 540-R-97-028 (dust generation)

## TEM BULK

☐ Drop Mount (Qualitative)☐ Chatfield SOP-1938-02☐ TEM NOB (Gravimetric) NY 198.4

## TEM MICROVAC

☐ ASTM D 5755-95 (Qualitative)

## TEM WIPE

☐ ASTM D 6480-99☐ Qualitative

## TEM WATER

☐ EPA 1003☐ EPA 1002☐ NYS 198.2

## OTHER

## LEAD ANALYSIS

## Flame Atomic Absorption

☐ Wipe SW846-7420 ☐ ASTM ☐ non-ASTM☐ Soil SW846-7420☐ Air NIOSH 7082☐ Chips SW846-7420 or AQAC 5009 (974.02)☐ Wastewater SW846-7420☐ TCLP LEAD SW846-1311/7420

## Graphite Furnace Atomic Absorption

☐ Air NIOSH 7105☐ Wastewater SW846-7421☐ Soil SW846-7421☐ Drinking Water EPA 239.2

## ICP - Inductively Coupled Plasma

☐ Wipe SW846-6010 ☐ ASTM ☐ non-ASTM☐ Soil SW846-6010☐ Air NIOSH 7300

## MATERIALS ANALYSIS

☐ Full Particle Identification☐ Optical Particle Identification☐ Dust Miles and Inhaled Fragments☐ Particle Size & Distribution☐ Product Comparison☐ Paint Characterization☐ Failure Analysis☐ Corrosion Analysis☐ Glove Box Containment Study☐ Petrographic Examination of Concrete☐ Portland Cement in Workplace Atmospheres☐ (OSHA ID-143)☐ Man Made Vitreous Fibers - MMVF's☐ Synthetic Fiber Identification☐ Other

## MICROBIAL ANALYSIS

## Air Samples

☐ Mold & Fungi by Air O Cell☐ Mold & Fungi by Agar Plate count & id☐ Bacterial Count and Gram Stain☐ Bacterial Count and Identification

## Water Samples

☐ Total Coliforms, Fecal Coliforms☐ Escherichia Coli, Fecal Streptococcus☐ Legionella☐ Salmonella☐ Giardia and Cryptosporidium

## Wipe and Bulk Samples

☐ Mold & Fungi - Direct Examination☐ Mold & Fungi - Culture follow up to☐ direct examination if necessary☐ Mold & Fungi - Culture (Count & ID)☐ Mold & Fungi - Culture (Count only)☐ Bacterial Count & Gram Stain☐ Bacterial Count & Identification☐ (3 most prominent types)☐ Other

## IAQ ANALYSIS

☐ Nuisance Dust (NIOSH 0500 & 0600)☐ Airborne Dust (PM10, TSP)☐ Silica Analysis by XRD ☐ NIOSH 7500☐ HVAC Efficiency☐ Carbon Black☐ Airborne Oil Mist☐ Other

Client Sample # (S)

Relinquished

Received

Relinquished

Received

Date

Date

Date

Date

TOTAL SAMPLE #

Date

Time

Time

Time

Page 1 of 2



107 Haddon Avenue, Westmont, New Jersey 08108

1-800-220-3675

<http://www.emsl.com>

SAMPLE NUMBER	SAMPLE DESCRIPTION/LOCATION	VOLUME Air (L)	Area (Inches sq.)
VW-1-1	12" VAT		
VW-2-1	2x2 CT		
VW-3-1	2x2 CT		
VW-3-2	↓		
VW-4-1	2x2 CT		
VW-5-1	FTGS ON FSGL ANALYZE TO FIST (+)		
VW-5-2	↓		
VW-5-3	↓		
VW-6-1	Plaster		
VW-6-2	↓		
VW-6-3	↓		
VW-6-4	Plaster		
VW-6-5	↓		
VW-6-6	↓		
VW-6-7	↓		
VW-7-1	9" VAT		
VW-8-1	Vinyl Base		
VW-9-1	Vinyl Base		
VW-10-1	Vinyl Base		
VW-11-1	2x2 VAT		
VW-12-1	Vinyl STAIN		
VW-13-1	Vinyl STAIN		
VW-14-1	GLUE ON CT ANALYZE TO FIST (+)		
VW-14-2	↓		
VW-14-3	↓		
VW-15-1	MAG ANALYZE TO FIST (+)		
VW-15-2	↓		
VW-15-3	↓		

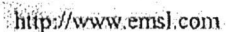
Relinquished:  
Received:  
Relinquished:  
Received:

Date:  
Date:  
Date:  
Date:

6/11/07

Time:  
Time:  
Time:  
Time:

1630



Relinquished:  
Received:  
Relinquished:  
Received:

Date \_\_\_\_\_  
Date \_\_\_\_\_  
Date \_\_\_\_\_  
Date \_\_\_\_\_

Time:  
Time:  
Time:  
Time:

Page 2 of 2

**EMSL Analytical, Inc.**

212 South Wagner Road, Ann Arbor, MI 48103

Phone: (734) 668-6810 Fax: 7346688532 Email: annarborlab@emsl.com

Attn: **Reuben P. Van Dam**  
**Fishbeck, Thompson, Carr & Huber**  
**1515 Arboretum Drive SE**  
**Grand Rapids, MI 49546**

Fax: (616) 464-3992 Phone: (616) 464-3749  
Project: G07453E HOPE COLLEGE

Customer ID: FTCH62  
Customer PO:  
Received: 06/13/07 6:28 PM  
EMSL Order: 080701824

EMSL Proj:  
Analysis Date: 6/28/2007  
Report Date: 6/28/2007

**Asbestos Analysis of Bulk Material via EPA 600/R-93/116. Quantitation using 400 Point  
Count Procedure.**

Sample	Location	Appearance	Non-Asbestos		Asbestos
			% Fibrous	% Non-Fibrous	% Type
VW-24-1 080701824-0001		Gray Fibrous Heterogeneous		99.25% Non-fibrous (other)	0.75% Chrysotile
VW-14-1 080701824-0002		Brown Fibrous Heterogeneous		99.50% Non-fibrous (other)	0.50% Chrysotile
VW-14-2 080701824-0003		Brown Fibrous Heterogeneous		99.75% Non-fibrous (other)	0.25% Chrysotile
VW-14-3 080701824-0004		Brown Fibrous Heterogeneous		99.50% Non-fibrous (other)	0.50% Chrysotile

Analyst(s)

Orlando J. Ivey II (4)

or other approved signatory

Disclaimer: Some samples may contain asbestos fibers present in dimensions below PLM resolution limits. EMSL Analytical Inc suggests that samples reported as <0.25% or none detected undergo additional analysis via TEM. The above test report relates only to the items tested. This report may not be reproduced, except in full, without written approval of EMSL Analytical Inc. This test report must not be used by the client to claim product endorsement by NVLAP or any agency of the United States Government. EMSL Analytical Inc., bears no responsibility for sample collection activities, analytical method limitations, or the accuracy of results when requested to separate layered samples. EMSL Analytical Inc., liability is limited to the cost of sample analysis. The test results contained within this report meet the requirements of NELAC unless otherwise noted. Samples received in good condition unless otherwise noted.

Analysis performed by EMSL Ann Arbor (NVLAP #101048-4)



## Chain of Custody

### Asbestos Lab Services

EMSL Analytical, Inc.  
212 S. Wagner Rd.  
Ann Arbor, MI 48103

Phone: (734) 668-6810  
Fax: (734) 668-8532  
<http://www.emsl.com>

Please print all information legibly.

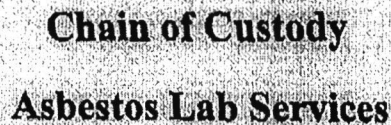
<b>Company:</b>	Fishbeck, Thompson, Carr & Huber, Inc.	<b>Bill To:</b>	Fishbeck, Thompson, Carr & Huber, Inc.
<b>Address1:</b>	1515 Arboretum Dr.	<b>Address1:</b>	1515 Arboretum Dr.
<b>Address2:</b>		<b>Address2:</b>	
<b>City, State:</b>	Grand Rapids, Michigan	<b>City, State:</b>	Grand Rapids, Michigan
<b>Zip/Post Code:</b>	49546	<b>Zip/Post Code:</b>	49546
<b>Country:</b>	USA	<b>Country:</b>	USA
<b>Contact Name:</b>	Reuben P. Van Dam	<b>Attn:</b>	Deb Shroufe
<b>Phone:</b>	616-464-3833	<b>Phone:</b>	616-464-3708
<b>Fax:</b>	616-464-3992	<b>Fax:</b>	616-464-3994
<b>Email:</b>	mcdavies@fitch.com / rpvandam@fitch.com		
<b>EMSL Rep:</b>		<b>P.O. Number:</b>	
<b>Project Name/Number:</b> G07453E - Hope College Vander Werf Hall			

MATRIX			TURNAROUND			
<input type="checkbox"/> Air	<input type="checkbox"/> Soil	<input type="checkbox"/> Micro-Vac	<input type="checkbox"/> 3 Hours	<input type="checkbox"/> 6 Hours	<input type="checkbox"/> Same Day or 12 Hours*	<input type="checkbox"/> 24 Hours (1 day)
<input type="checkbox"/> Bulk	<input type="checkbox"/> Drinking Water		<input type="checkbox"/> 48 Hours (2 days)	<input type="checkbox"/> 72 Hours (3 days)	<input type="checkbox"/> 96 Hours (4 days)	<input type="checkbox"/> 120 Hours (5 days)
<input type="checkbox"/> Wipe	<input type="checkbox"/> Wastewater		<input type="checkbox"/> 144+ hours (6-10 days)			

TEM Air, 3 hours, 6 hours, Please call ahead to schedule. There is a premium charge for 3-hour test, please call 1-800-220-3675 for price prior to sending samples. You will be asked to sign an authorization form for this service.

\*12 hours (must arrive by 11:00 a.m. Mon-Fri), Please Refer to Price Quote

<b>PCM - Air</b> <input type="checkbox"/> NIOSH 7400(A) Issue 2: August 1994 <input type="checkbox"/> OSHA w/TWA <input type="checkbox"/> Other:	<b>TEM Air</b> <input type="checkbox"/> AHERA 40 CFR, Part 763 Subpart E <input type="checkbox"/> NIOSH 7402 <input type="checkbox"/> EPA Level II	<b>TEM WATER</b> <input type="checkbox"/> EPA 100.1 <input type="checkbox"/> EPA 100.2 <input type="checkbox"/> NYS 198.2
<b>PLM - Bulk</b> <input type="checkbox"/> EPA 600/R-93/116 <input type="checkbox"/> EPA Point Count <input type="checkbox"/> NY Stratified Point Count <input type="checkbox"/> PLM NOB (Gravimetric) NYS 198.1 <input type="checkbox"/> NIOSH 9002: <input type="checkbox"/> EMSL Standard Addition:	<b>TEM BULK</b> <input type="checkbox"/> Drop Mount (Qualitative) <input type="checkbox"/> Chatfield SOP - 1988-02 <input type="checkbox"/> TEM NOB (Gravimetric) NYS 198.4 <input type="checkbox"/> EMSL Standard Addition:	<b>TEM Microvac/Wipe</b> <input type="checkbox"/> ASTM D 5755-95 (quantitative method) <input type="checkbox"/> Wipe Qualitative
<b>SEM Air or Bulk</b> <input type="checkbox"/> Qualitative <input type="checkbox"/> Quantitative	<b>PLM Soil</b> <input type="checkbox"/> EPA Protocol Qualitative <input type="checkbox"/> EPA Protocol Quantitative <input type="checkbox"/> EMSL MSD 9000 Method fibers/gram	<b>XRD</b> <input type="checkbox"/> Asbestos <input type="checkbox"/> Silica NIOSH 7500  <b>OTHER</b> <input type="checkbox"/>



**Phone: (734) 668-6810**  
**Fax: (734) 668-8532**  
**<http://www.emsl.com>**

**Client Sample # (s)** \_\_\_\_\_

Total Samples #: 0

Relinquished: \_\_\_\_\_ Date: \_\_\_\_\_

Time: \_\_\_\_\_

Received: \_\_\_\_\_ Date: \_\_\_\_\_

Time: \_\_\_\_\_

Relinquished: \_\_\_\_\_ Date: \_\_\_\_\_

Time: \_\_\_\_\_

Received: \_\_\_\_\_ Date: \_\_\_\_\_

Time: \_\_\_\_\_

[illegible]

**QC Documentation  
Environmental Services Department**

**AUG 24 2007**

<b>Project Name</b> <u>Hope College / Vander Werf</u>			
<b>Project Number</b> <u>607453E</u>			
<b>Project Manager</b> <u>DL</u>			
<b>Document Title</b> <u>R: / 607453E / Vander Werf.doc + XLS</u>			
<b>Document type</b>			
Report/Letter	<input checked="" type="checkbox"/>	QAPP	<input type="checkbox"/>
Work Plan	<input type="checkbox"/>	HASP	<input type="checkbox"/>
Permit	<input type="checkbox"/>	Proposal	<input type="checkbox"/>
Env. Mgmt. Plan	<input type="checkbox"/>	Technical Memo	<input type="checkbox"/>
Other	<input type="checkbox"/>	<input type="checkbox"/>	
<b>Check items included for review:</b>			
Draft text	<input checked="" type="checkbox"/>	Appendices	<input type="checkbox"/>
Figures	<input checked="" type="checkbox"/>	Supporting documentation	<input checked="" type="checkbox"/>
Tables	<input checked="" type="checkbox"/>	Other	<input type="checkbox"/>
<b>Draft Text Review</b>			
Date created:	<u>6/18/07 8/23/07</u>	Date reviewed:	<u>8/23/07 8/28/07</u>
Author:	<u>RPV</u>	Reviewed by:	<u>MCD / DL</u>
Edits required:	<input checked="" type="checkbox"/> yes <input type="checkbox"/> no	Comments:	  
<b>Figures Review</b>			
Date created:	<u>8/23/07</u>	Date reviewed:	<u>8/23/07 8/28/07</u>
Created by:	<u>JM3</u>	Reviewed by:	<u>MCD DL</u>
Edits required:	<input checked="" type="checkbox"/> yes <input type="checkbox"/> no	Comments:	  
<b>Tables Review</b>			
Date created:	<u>6/18/07 8/23/07</u>	Date reviewed:	<u>8/23/07 8/28/07</u>
Created by:	<u>RPV</u>	Reviewed by:	<u>MCD / DL</u>
Edits required:	<input checked="" type="checkbox"/> yes <input type="checkbox"/> no	Comments:	  
<b>Appendices Review</b>			
Date created:	<u>8/23/07</u>	Date reviewed:	<u>8/23/07 8/28/07</u>
Compiled by:	<u>RPV</u>	Reviewed by:	<u>MCD DL</u>
Edits required:	<input type="checkbox"/> yes <input checked="" type="checkbox"/> no	Comments:	<u>copies have been replaced with some having no mar clean note-free copies</u>
<b>Additional Review Comments/Notes</b>			
<b>Revisions/Edits</b>			
Completed on:	 	Comments:	 
Completed by:	 		 

**QC Documentation  
Environmental Services Department**

AUG 24 2007

<b>Project Name</b> <u>Hope college / Vander Werf</u>			
<b>Project Number</b> <u>G07453 E</u>			
<b>Project Manager</b> <u>DL</u>			
<b>Document Title</b> <u>R/07453E / Van Zoren, doc + x/s</u>			
<b>Document type</b>			
Report/Letter	<input checked="" type="checkbox"/>	QAPP	<input type="checkbox"/>
Work Plan	<input type="checkbox"/>	HASP	<input type="checkbox"/>
Permit	<input type="checkbox"/>	Proposal	<input type="checkbox"/>
		Env. Mgmt. Plan	<input type="checkbox"/>
		Technical Memo	<input type="checkbox"/>
		Other	<input type="checkbox"/>
<b>Check items included for review:</b>			
Draft text	<input checked="" type="checkbox"/>	Appendices	<input type="checkbox"/>
Figures	<input type="checkbox"/>	Supporting documentation	<input type="checkbox"/>
Tables	<input checked="" type="checkbox"/>	Other	<input type="checkbox"/>
<b>Draft Text Review</b>			
Date created:	<u>RPV</u>	Date reviewed:	<u>DL</u>
Author:	<u>6/14/07</u>	Reviewed by:	<u>10/22/07</u>
Edits required:	<input type="checkbox"/> yes <input type="checkbox"/> no	Comments:	 
<b>Figures Review</b>			
Date created:	 	Date reviewed:	 
Created by:	 	Reviewed by:	 
Edits required:	<input type="checkbox"/> yes <input type="checkbox"/> no	Comments:	 
<b>Tables Review</b>			
Date created:	<u>RPV</u>	Date reviewed:	<u>11/22/07</u>
Created by:	<u>6/14/07</u>	Reviewed by:	<u>DL</u>
Edits required:	<input type="checkbox"/> yes <input type="checkbox"/> no	Comments:	 
<b>Appendices Review</b>			
Date created:	 	Date reviewed:	 
Compiled by:	 	Reviewed by:	 
Edits required:	<input type="checkbox"/> yes <input type="checkbox"/> no	Comments:	 
<b>Additional Review Comments/Notes</b>			
<b>Revisions/Edits</b>			
Completed on:	 	Comments:	 
Completed by:	 		 

Dave -

I did not have time to review this one and will be out until 9/4/07.

M.

Don't we lose this one?