



COLLEGE

ASSESSMENT UPDATE

September 2024

IN THIS NEWSLETTER

Review your Assessment Plans

Critical Thinking Assessment

Anchor Plan Artifact Collection

Assessment Reports due October 1

Learning Outcomes Cards

The Future of Hope College Assessment

Please share this newsletter with others
in your department who lead the
assessment of student learning.

[Newsletters and assessment due dates
can always be found in the Assessment
Resources tab of our web pages.](#)

TIME TO REVIEW PROGRAM ASSESSMENT PLANS

Notify us if you have changed your course mapping or assessment methods so we can update your plans [on the college website](#).

Updates and corrections should be sent to moorea@hope.edu by October 1st.

CRITICAL THINKING ASSESSMENT LISTS DUE SEPTEMBER 30

Each academic department participates at least once every three years in the critical thinking assessment of Hope seniors. Results are used for our program, Anchor Plan, and Common Learning Outcome assessment.

Unfortunately, we cannot complete the detailed analyses needed to identify areas for improvement due to low department and student participation rates.

These analyses are essential since our aggregate scores indicate that our graduating seniors' critical thinking skills are below the college target.

Departments decide when to participate and the assessment is handled by Frost Center.

We need three things from you:

- 1) Encouraging your students early and often to reach a high completion rate (**important!**)
- 2) A list of your senior student names & emails to whom the assessment should be sent
- 3) The date when the email with the assessment link should be sent to them

To participate this semester, send this information to frostcenter@hope.edu by September 30th.

PLANNING FOR ANCHOR PLAN ARTIFACT COLLECTION

Departments offering courses this year with the following attributes mapped to Anchor Plan Outcome 1 (SS, MNS, MA, NSL, HST 100-level, HCP 100-level, PHL 100-level, RL2) or Outcome 4 (NSL, ART, HST 200-level, HCP 200-level, PHL 200-level) are required to collect a sample of artifacts demonstrating student progress toward the outcome.

Now is the time to calculate the number of artifacts your department will collect each semester (Summer, Fall, Spring).

Office managers received training to coordinate this process. Guidance documents are available [at the bottom of this webpage](#).

Questions? Contact Tom Sura, Director of General Education (sura@hope.edu), or your Dean's Assistant.

2023-24 ASSESSMENT REPORTS ARE DUE

Assessment reports for academic and cocurricular program outcomes assessed in 2023-24 are due October 1. They can be submitted in our new portal at in.hope.edu/assessment. Passwords are no longer needed.

Before you submit your assessment report, your department should review and discuss the results and identify any improvements they will make to improve student learning. The report form requires this information.

Assessment Reports for the Anchor Plan and Common Learning Outcomes assessed in 2023-24 are due from the General Education Council and the Assessment Committee by December 1.

Links to Assessment Resources

[Anchor Plan Assessment Information and Resource Guides](#)

[Curricular Program Assessment Plans](#)

[Cocurricular Program Assessment Plans](#)

[Assessment Updates and Due Dates](#)

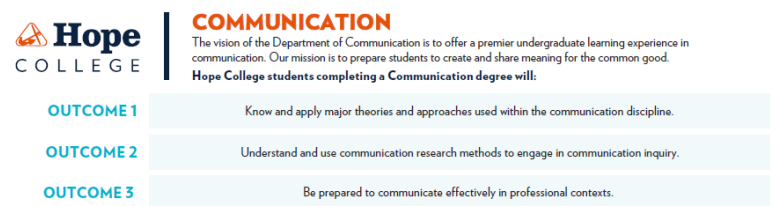
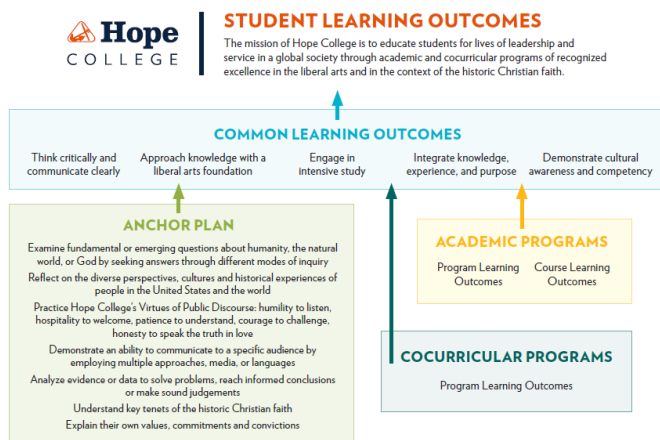
[HLC Review Team Report](#) (see pages 34-35 for evaluation of Hope's assessment activities)

To learn more about assessment of student learning, [explore the Hope College Assessment website](#)

LEARNING OUTCOMES CARDS

The Assessment Office prints two-sided cards that illustrate how your program outcomes, the Anchor Plan Outcomes, and the Common Learning Outcomes work together in a Hope education. They are a great tool for faculty members and students.

[Order your student learning outcome cards here!](#) There is no cost to your department for the cards and they can be delivered to your department within 24-48 hours.



2024-25 Assessment Committee Members

Reach out to your divisional representatives or any of the individuals listed below if you have questions about Hope's assessment processes and policies or the work of the committee.

Allison Moore, Director of Assessment & Accreditation (Chair)

Daniel Woolsey (Secretary) Humanities

Julia Gillespie, Alumni & Family Engagement

Gerald Longjohns, Student Development

Donald Friesner, Institutional Research

Chadwick Perrin, Student Congress

TBD, Student Congress

Tom Sura, Director of General Education

Kara Brems, Arts

David Keep, Arts

David DeJong, Humanities

Vanessa Muilenburg, Natural & Applied Sciences

Carrie Dummer, Natural & Applied Sciences

Paula Ferrara, Social Sciences

Allie Whitford, Social Sciences

Susan Brondyk, Academic Affairs Board Liaison

A NEW DAY FOR HOPE COLLEGE ASSESSMENT

I am happy to share that Provost Griffin and the search committee have selected an excellent academic leader as Hope's next Director of Assessment and Accreditation. Allison Moore comes with the assessment and accreditation experience Hope needs and the knowledge and skills that will support the continued maturity of Hope assessment for the benefit of students.

More information has been shared in Hope Daily. She will begin on September 30 and can be found in Anderson-Werkman Room 267 – within the Frost Center for Data and Research. If you want to meet with Allison, contact her at moorea@hope.edu or x7508.

Thank you for everything you continue to do to ensure curricular and cocurricular excellence for Hope students!

All the best,



Kathy S. Kremer, PhD

Senior Director of Assessment and Accreditation (Retired)

Hope College Accreditation Liaison Officer

Frost Center for Data and Research

Hope College

Anderson-Werkman Center

100 East 8th Street, Suite 267, PO Box 9000, Holland, MI 49422-9000

office [616.395.7508](tel:616.395.7508) | cell [616.204.4588](tel:616.204.4588)

kremerk@hope.edu | hope.edu