

Analysis of Effect of First Generation –Senior Year on 6-Term Retention

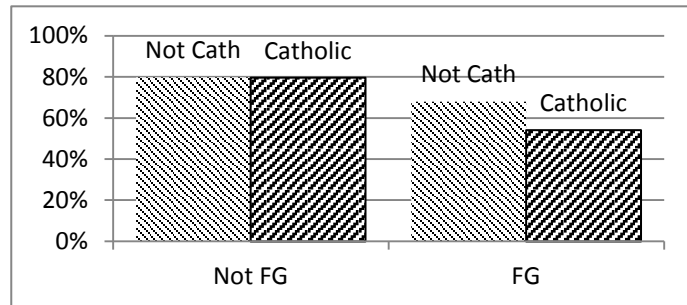
An analysis of the 6-Term Retention of the Fall 2014 cohort of incoming Hope students reveals that the retention rate is significantly lower for first generation students at 65% versus 80% for those not first gen. This analysis seeks to identify those other factors that relate to this difference.

First Contact Senior Year

There is a strong relationship between First Generation and First Contact Senior. Of the 96 first generation students in the cohort, 47 (49%) also made their first contact in their senior year. Only 23% of non-firstgens are senior-year first-contacters. Of the 214 students in the cohort who are senior-year first-contacters, 47 (22%) are firstgens. The retention rate of those in both categories is 61%, while the retention rate of those in either of the categories and not the other is 67%. This indicates that there is not much interaction between these categories.

Catholic

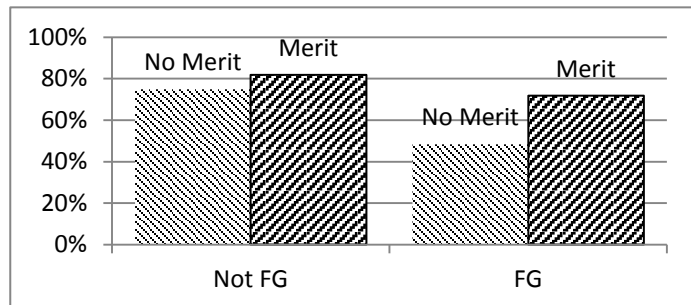
	6-Term Retention	
	Not FG	FG
Not Cath	79.89%	68.06%
Catholic	79.63%	54.17%



The above table shows that there is no difference between the retention rate of Catholic students and non-Catholic students for the non-firstgen cohort. Firstgen students not only have a lower retention rate overall, but Catholic firstgens have a lower rate than non-Catholic firstgens, though not significantly so.

Merit

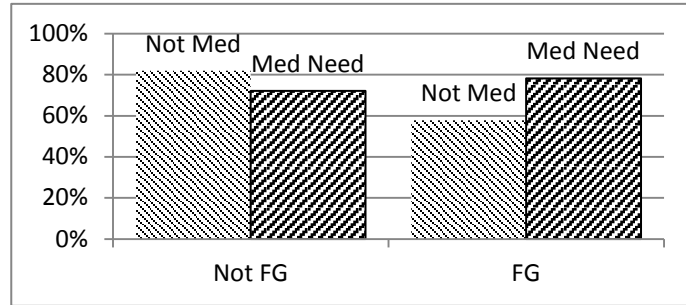
	6-Term Retention	
	Not FG	FG
No Merit	74.74%	48.28%
Merit	81.66%	71.64%



Like senior-year first-contacters, firstgens show a strong connection to merit award in their retention rate. Unlike senior-year first contacters, who are retained at a lower rate if they receive a merit award, the retention advantage increases when merit recipients are firstgens. Firstgens with no merit award are retained at less than 50%, though that population is only 29 students.

Medium Need (\$25-37K)

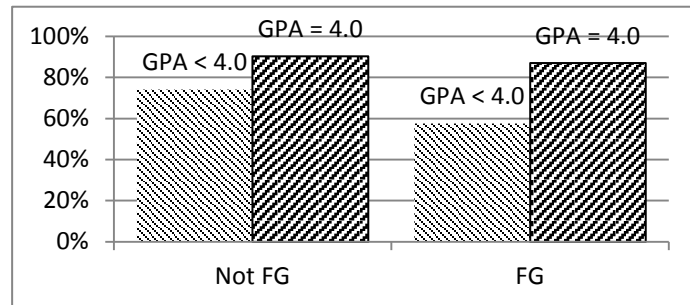
	6-Term Retention	
	Not FG	FG
Not Med	81.82%	57.81%
Med Need	72.11%	78.13%



While firstgens at all other need levels showed the same tendency as non-firstgens in their retention rates, firstgens of medium need had a reverse tendency from non-firstgens. This means that while non-firstgens of medium need had a lower retention rate than those not with medium need, firstgens of medium need had a statistically significant higher rate.

HS GPA 4.0

	6-Term Retention	
	Not FG	FG
GPA < 4.0	74.15%	57.53%
GPA = 4.0	90.28%	86.96%



An interesting relationship between firstgen and GPA 4.0 is that for firstgens, there is a 40% difference between the retention rate of those with a 4.0 high school GPA and those without. This does not have statistical significance because only 23 firstgen students had a 4.0.